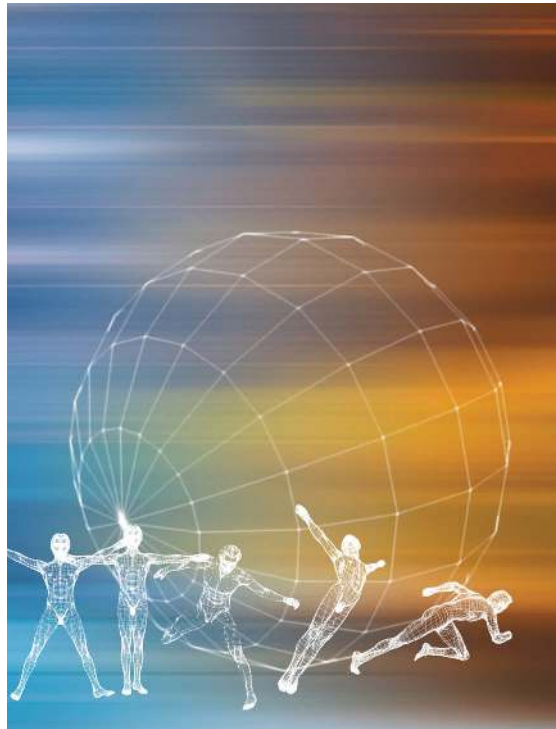


**Real Time Database
Replication
For
DSM Database Systems**

RoboDJ

RoboDJ is a powerful Database Replication product for replicating data held in legacy DSM Database Systems.



**RoboDJ can be used to replicate
data from any legacy DSM
Database System.**

**Data is replicated in Real-Time
to a Relational Database making
it accessible using any ODBC
compliant Reporting Tool.**

To obtain further information or inquire about a Product Demonstration please contact Grapevine Solutions at...



**+353 1 6218004
sales@grapevine.ie**

grapevine
solutions

**Real Time Database
Replication
for
DSM Database Systems**



Features at a glance...

- ✓ **Easy Installation & Configuration**
- ✓ **DSM Data is replicated to a standalone Caché database**
- ✓ **Replicates Data in Real Time**
- ✓ **Menu to manage replication process**
- ✓ **Audit Trail to track replication progress**
- ✓ **No impact on existing DSM system processes**
- ✓ **Customizable replication options**

Benefits at a glance...

- ✓ **Makes legacy data available to SQL/ODBC Reporting Tools.**
- ✓ **Low cost Database Replication with huge benefits.**
- ✓ **Extends Lifetime of Legacy Systems.**
- ✓ **Provides a backup option for DSM applications & data.**
- ✓ **Reduces the load on legacy DSM database systems.**